

Circle the matching letter.

Can you get all 10 correct?



a = A

b = B

c = C

d = D

e = E

1

e



A

B

C

D

E

2

a



A

B

C

D

E

3

e



A

B

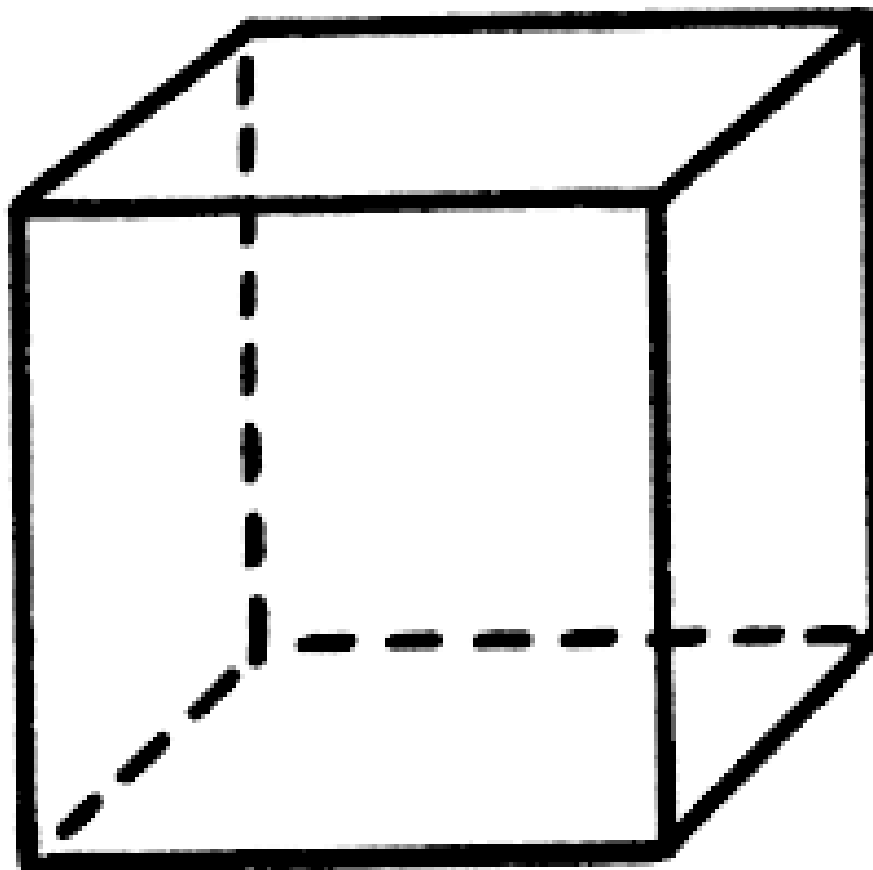
C

D

E

4

C



A

B

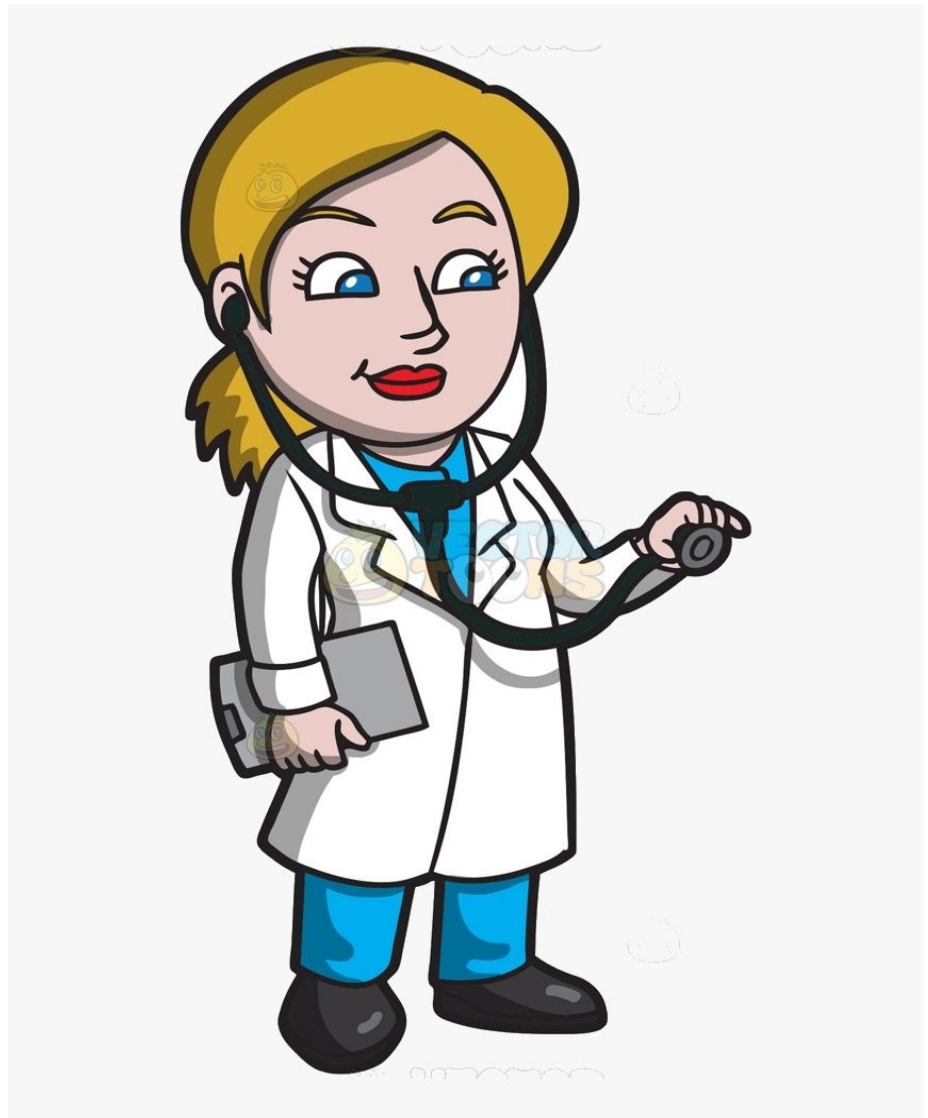
C

D

E

5

d



A

B

C

D

E

6

b



A

B

C

D

E

7

d



A

B

C

D

E

8

e



A

B

C

D

E

9

e



A

B

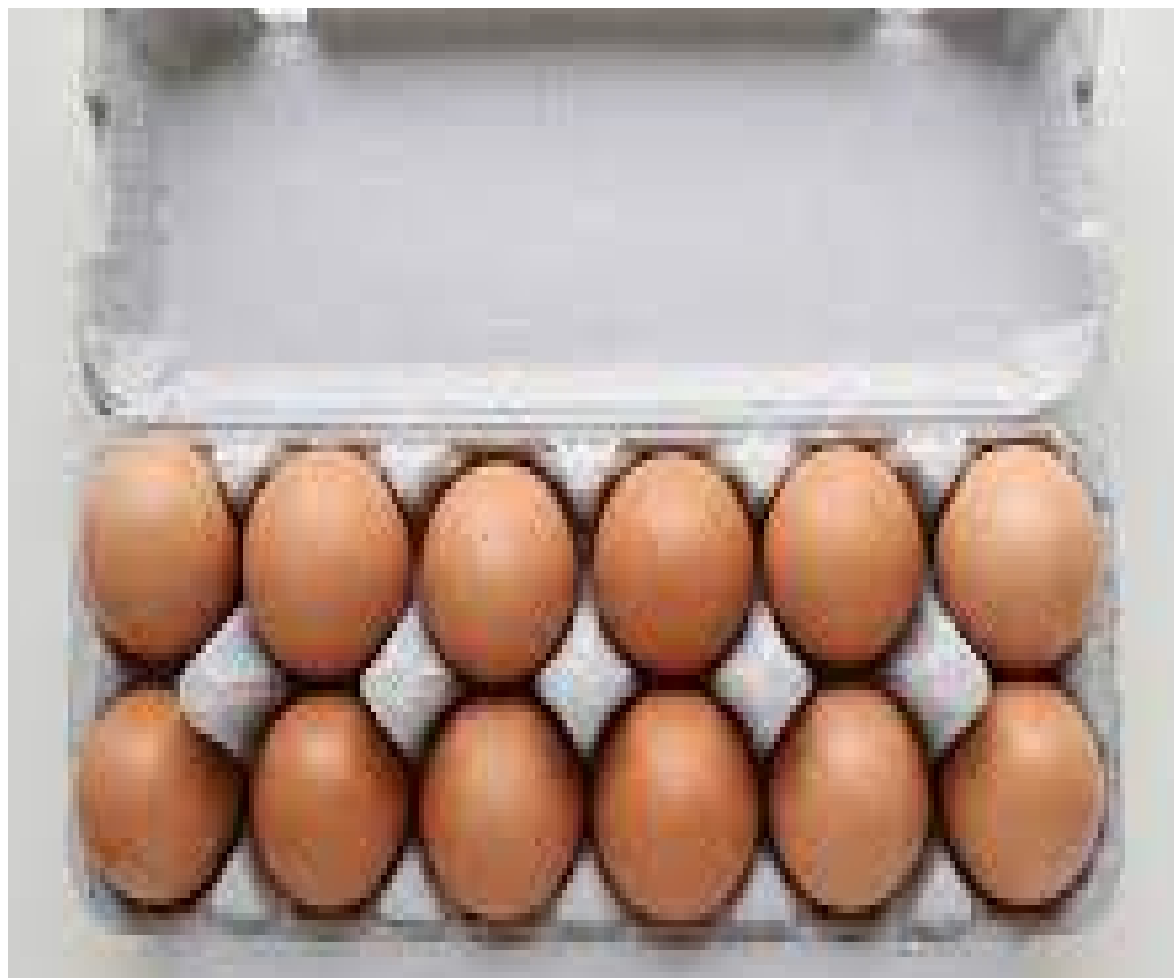
C

D

E

10

e



A

B

C

D

E



**Very
Good**